



AUCTION

LEADING THE INDUSTRY SINCE 1945

Thursday – June 21, 2018 – 5:00 PM

10.5 Acres Vacant Land

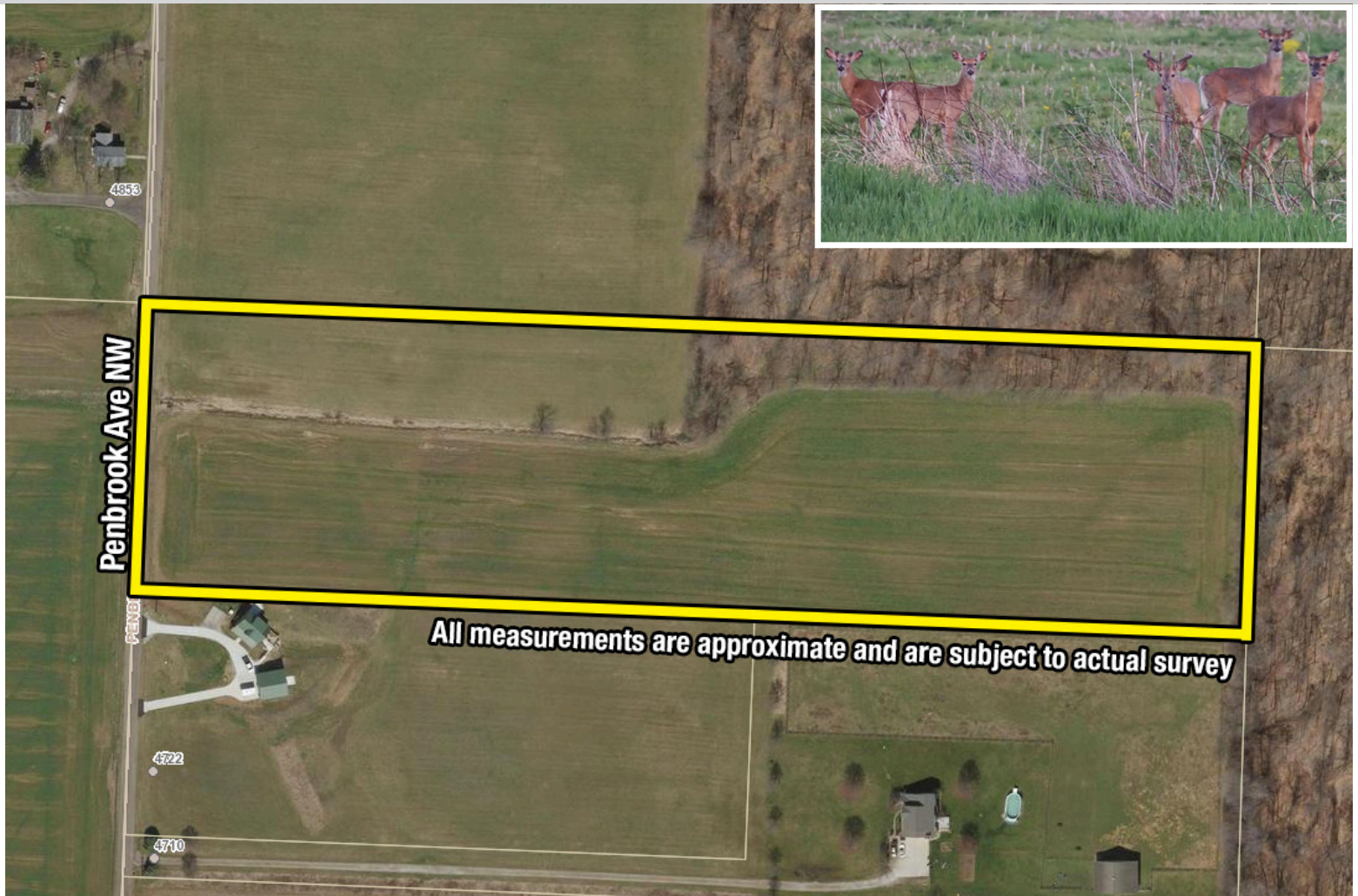
NEAR CLAY'S PARK – LAWRENCE TWP.

Stark County – Tuslaw Schools

Absolute auction, all sells to the highest bidder on location:

Penbrook Ave. NW, North Lawrence, OH 44666

Directions: From SR-93 south of SR-21 and north of SR-172 take Orrville St. east to Penbrook Ave. then north to auction.
Watch for KIKO signs.



Information is believed to be accurate but not guaranteed.



330.455.9357 • kikoauctions.com





KIKO AUCTIONEERS

2722 Fulton Dr. NW, Canton, OH 44718

kikoauctions.com

Thursday – June 21, 2018 – 5:00 PM

10.5 ACRES VACANT LAND

Near Clay's Park – Lawrence Twp.
Stark County – Tuslaw Schools



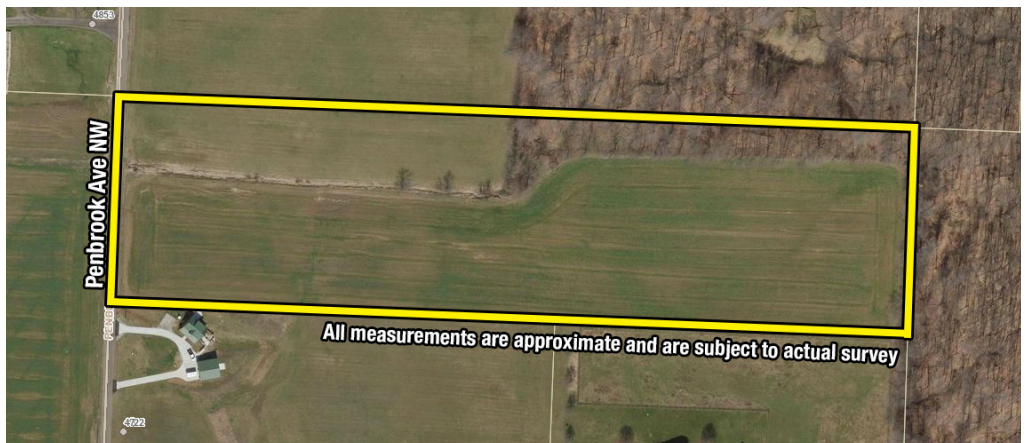
Members – State and National Auctioneers Association



REAL ESTATE: Exciting opportunity presents 10.5 acres of gently rolling farmland with approx. 300 ft. frontage on Penbrook Ave. Ideal future homesite and horse or hobby farm. You decide! Walk land over at your convenience. Financing available to qualified bidders. All mineral rights owned by seller will transfer.



TERMS ON REAL ESTATE: 10% down auction day, balance due at closing. A 10% buyer's premium will be added to the highest bid to establish the purchase price, which goes to the seller. Any desired inspections must be made prior to bidding. All information contained herein was derived from sources believed to be correct. Information is believed to be accurate but not guaranteed.



AUCTION BY ORDER OF:

The Ruth M. Byall Trust &
Dennis D Byall Trust



Auctioneer/Realtor®
PETER R. KIKO SR.
330-705-5996
peter@kikocompany.com



Realtor®
PETE KIKO JR.
330-749-7898
pkiko@kikocompany.com



Apprentice Auctioneer/Realtor®
KRISTEN KIKO
330-234-7110
kristen@kikocompany.com



330.455.9357 • kikoauctions.com

